



corenetX

What You Need to Know

ZOOM | 20 Oct 2023

| | |
|-------------|--|
| 1000 - 1010 | Opening Address Mr Han Yong Hoe, Executive Director (URA) |
| 1010 - 1030 | CORENET X : Implementation Details and Timelines Ms Chan Li Ming, Senior Architect (URA) |
| 1030 - 1050 | Preparing for CORENET X Submissions – using the Code of Practice Ar Colin Chew, Senior Architect (BCA) |
| 1050 - 1150 | Q&A Moderator: Mr Han Yong Hoe, Executive Director (URA) Panelists from regulatory agencies, led by Er Clement Tseng (Group Director, BCA) and Ms Goh Chin Chin (Group Director, URA) |
| 1150 - 1200 | Closing Feedback form and administrative information for CPD/ PDU points |



While waiting,
download 1st
Edition of the
CORENET X
Code of Practice!



CORENET X IMPLEMENTATION DETAILS + TIMELINE

Ms Chan Li Ming
Senior Architect
Urban Redevelopment Authority



01

CORENET X

- Recap of new Regulatory Approval process for Building Works (RABW) process & Direct Submission Process (DSP)

02

Phasing of Implementation of CORENET X

- Key dates to note

03

Initiatives to Get Ready

- Information and Resources
- Training
- Sandbox and Pilot Projects
- Code of Practice
- Increasing BIM adoption

04

Readiness Check

- What we can do individually
- What firms need to do



01

CORENET X

The new Regulatory Approval Process for Building Works

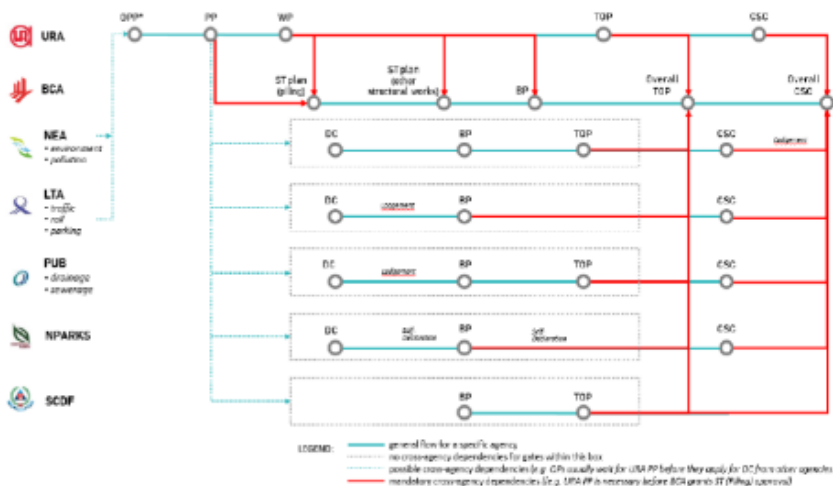
Key Changes and Potential Impact

New Regulatory Approval for Building Works (RABW) Process – 3 Gateways

All building works, regardless of GFA, will need to go through a new process involving 3 key sequential submission gateways to all Agencies for one collective and coordinated approval at each gateway.

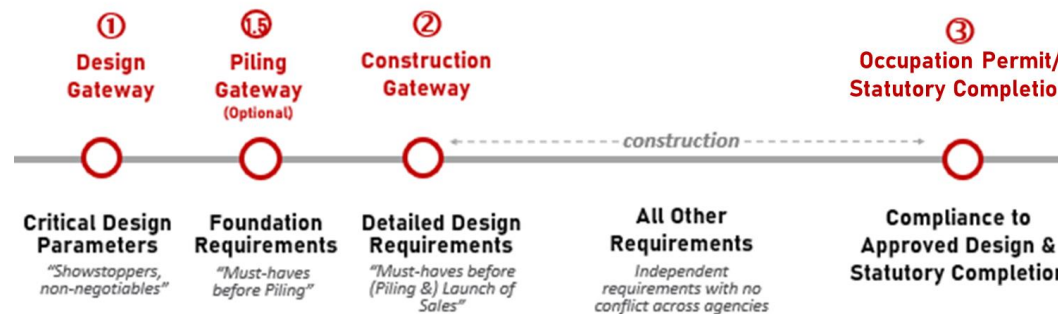
CURRENT

- Review in silos through over 20 approval touchpoints with separate responses. Fast, but disjointed.
- Uncoordinated design, submissions in silos.
- Abortive works from conflicting plans. Overall lower productivity.

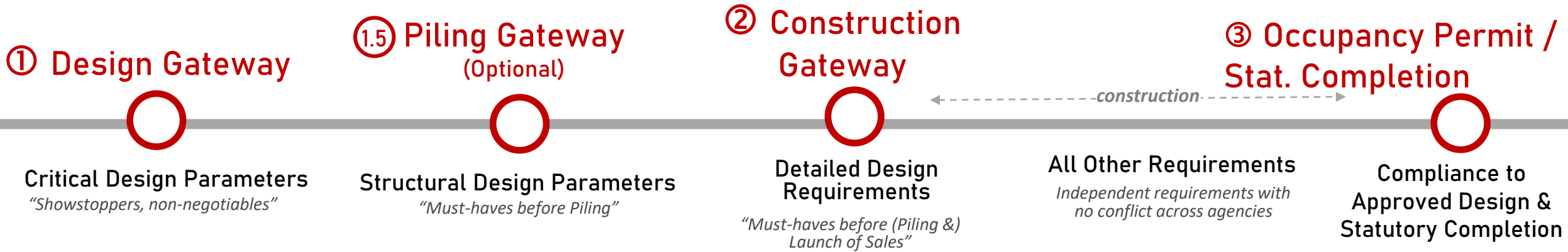


UPCOMING

- The new regulatory approval process streamlines the multiple touchpoints into key submission gateways.
- At these gateways, **coordinated submissions** (consisting of various building disciplines) will be submitted and **reviewed collectively** by agencies. This helps to ensure cross-agency issues and conflicts are identified upfront.

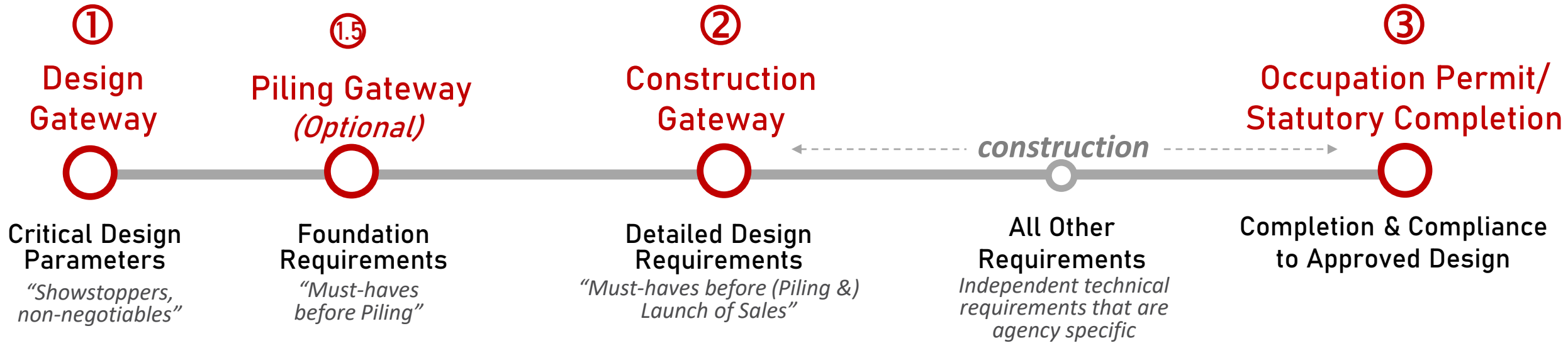


New RABW - Agencies' requirements at each Gateway



| Submission Stage | Objective |
|---|---|
| Design Gateway | To resolve key parameters which have an impact on design parameters and client's brief, before proceeding to detailed design |
| Piling Gateway (Optional) | To resolve requirements pertaining to foundation works that do not affect main structural works |
| Construction Gateway | To resolve multi-agency requirements concerning design details that need to be coordinated before commencement of works and launch of sales |
| Independent submissions (if applicable) | To clear agency-specific requirements of respective building components regulated by respective agency E.g.: Structural submission of ancillary structures and components such as barriers/ claddings to BCA |
| Completion Gateway | To document "As-Built" plans and issue Occupancy Permit/ Statutory Completion |

Approvals under consolidated CORENET X gateways



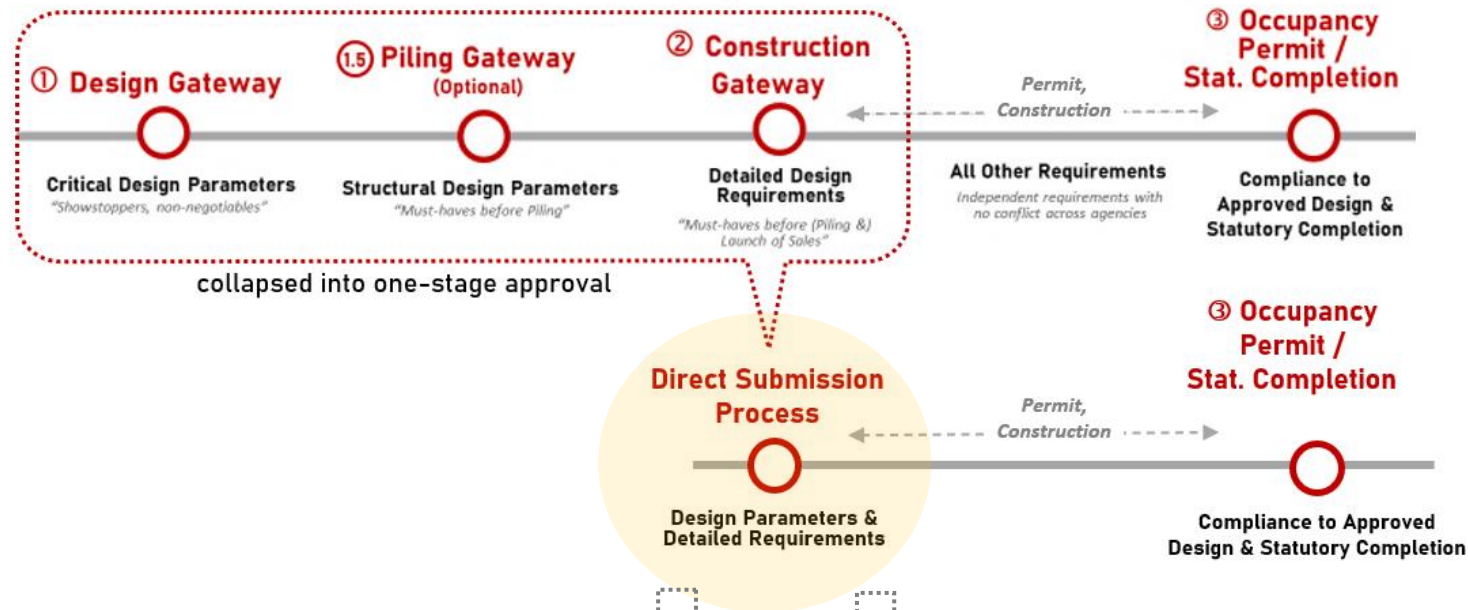
Approvals at each Gateway consist of the following agencies' equivalent clearances today:

- URA PP
- LTA Layout Plan, NEA and PUB DC Clearances
- NParks DG Approval including tree-cutting
- BCA ST Approvals for Permanent Piling Works
- LTA RPZ AIP for Pile Design and Layout Plan
- Independent clearances, e.g. NParks EMMP & PUB's Earth Control Measures Approval
- URA WP
- BCA BP and ST Approvals
- LTA Street Plan Clearance, BP (Parking), BP (Rails)
- NEA and PUB BP Clearance Cert
- SCDF BP Approval
- NParks CG Approval

Key Objective of Gateways
 Resolve **multi-agency requirements** concerning design details that need to be **coordinated**

Direct Submission Process (DSP)

Differentiated approach for less complex building works that need not be subjected to the typical RABW 3-Gateway process (*e.g. single-unit residential landed development, standalone pavilion/linkway, racking system, etc*)



One Stage Lodgement/Self-Declaration

- Models/drawings submitted, together with QP declaration on compliance with regulatory requirements, for auto-approval by agencies
- Audits conducted by agencies

One Stage Plan Check for Approval

- Agencies directly assess plan application submission. Work will not be allowed to commence until after such approvals are granted

System will auto-channel the applications based on the details provided



02

CORENET X

Implementation and Key Dates

CORENET X phased approach for industry onboarding

| Phased Onboarding | Date | Requirements |
|---------------------|-------------|--|
| New Projects | | |
| Soft Launch | 18 Dec 2023 | Invited projects (e.g. teams that are familiar, have participated in Sandbox, etc) |

Transition Plan for Ongoing Projects

Challenges faced by Ongoing Projects

- i. Difficulties adjusting to the new process as their project timeline would be impacted
- ii. Projects may be at different points of the project timeline and the impact would vary

Potential Transition Scenarios for Ongoing Projects

| S/N | State of project when mandated submission on CORENET X system takes effect | Next steps required under the new process |
|-----|--|---|
| 1 | In early stage of the design | Prepare for Design Gateway |
| 2 | Obtained some but not all DC clearances | Secure remaining DC clearances at Design Gateway submission |
| 3 | Obtained some but not all BP clearances | Secure remaining BP clearances at Construction Gateway submission |
| 4 | Obtained WP and BCA's BP approval, midst of construction or nearing completion | Independent submission / secure outstanding agency clearances before Completion Gateway |

Transition Plan for Ongoing Projects

Preparation:

- Agencies will give notice of more than 2 years to the industry, as to when full migration to CORENET X is expected
- Projects are advised to plan for and secure plan approvals from all Authorities prior to the transition to CORENET X to minimise disruption
- Project teams with ongoing projects should minimally secure time-sensitive approvals, that may potentially impact the project timeline prior to the transition.

Submission Requirements:

- CX can support both BIM and non-BIM projects under the new RABW process
- To facilitate transition, open-BIM format (i.e. IFC-SG) will not be imposed on ongoing projects as it will require a lot of effort from the QPs to re-prepare the submissions

Approval Status:

- For projects mapped to the new process under CX:
 - Agencies' approvals already issued under CN2 remain valid
 - Works that have commenced on-site based on the approval obtained under CN2 can continue and the relevant issued permits remain valid
 - Industry will only need to apply for the outstanding approvals under the respective gateways



03

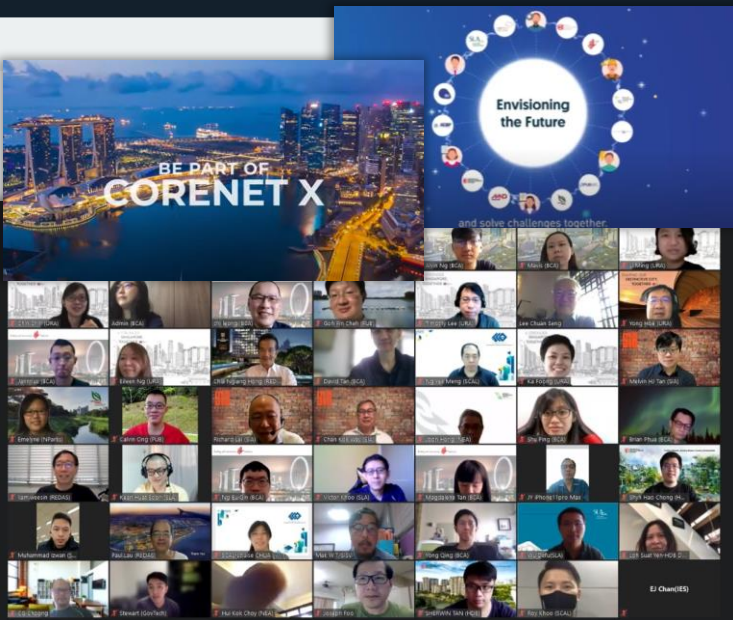
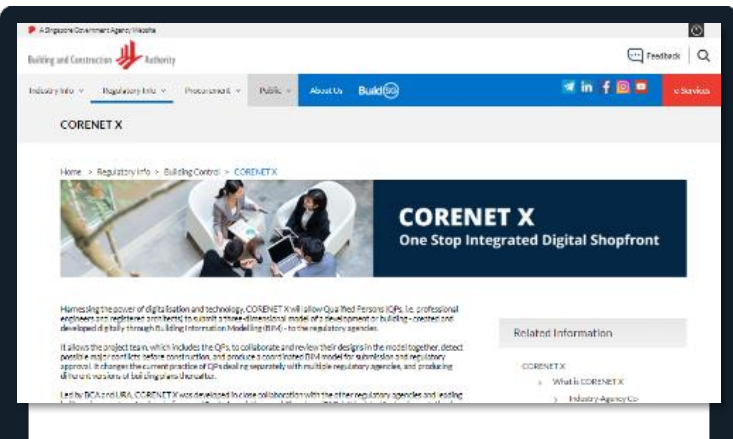
CORENET X

Getting Yourself Ready

Resources and Information

CORENET X website with resource toolkits, videos, FAQs, infographics, webinar materials, training sessions

Circulars to industry on upcoming changes



- + [25 Aug 2023] IFC-SG Interoperability Tool for upcoming CORENET-X Submissions by Autodesk + SIA + BuildingSmart Singapore + CORENET X
- + [21 Aug 2023] ACES CORENET X Lunchtime Talk
- + [15 Jun 2023] CORENET X Draft Code of Practice Webinar
- + [16 Mar 2023] CORENET X Leadership Forum
- + [Oct 2022] Joint-TAC Industry Webinar
- + [Sep to Nov 2021] CORENET X introductory webinars

- Frequently Asked Questions
- FAQ on 1. General Information
- FAQ on 2. New Regulatory Approval Process
- FAQ on 3. New Data Requirements and Technology
- FAQ on 4. Getting Ready
- FAQ on 5. Agency-Specific Queries and Others

2 **Being Future-Ready: Embracing a New Model**
by Ar. Tan Jwu Yih, Director, BCA

Understand the importance of data standardisation and how firms can benefit and build new capabilities.

[Download Slides: Presentation 2 by Ar. Tan Jwu Yih \(BCA\)](#)

3 **Leading the Way: IDA's Insights from their Digital Transformation Journey towards CORENET X**
by Ar. Lin Hongsui, Director, ID Architects Pte Ltd

An industry perspective on the benefits, challenges, and the necessary in-house preparation.

[Download Slides: Presentation 3 by Ar. Lin Hongsui \(IDA\)](#)

Circular No.: UR/APB/2023/01-DCG
Our Reference: APPBCA-2023-02
1 February 2023

See Distribution list
Dear Sir/Madam

CORENET X

This circular is to inform and prepare the industry for CORENET X implementation, planned progressively from 2H 2023 onwards and will replace CORENET 2.0.

What is CORENET X?

2 Announced by Minister of National Development in September 2021 at the International Built Environment Week, CORENET X is a co-creation effort led by BCA and URA between the public agencies' and industry² to transform the current regulatory landscape and practices through process re-engineering, adoption of Building Information Modelling ("BIM") technologies and collaborative workflows.

3 The new regulatory approval process under CORENET X will require industry to collaborate and coordinate their designs upfront before submission. CORENET X leverages on digital technologies to enable industry players to conduct pre-submission

¹ CORENET X is co-led by the Building and Construction Authority (BCA) and Urban Redevelopment Authority (URA), alongside other regulatory agencies National Parks Board (NParks), Singapore Civil Defence Force (SCDF), Land Transport Authority (LTA), Public Utilities Board (PUB), National Environment Agency (NEA) and Singapore Land Authority (SLA), and two public development, housing & development boards (HDB) and JTC Corporation (JTC) and supported by the government technology agency (GovTech).

² CORENET X was developed in close cooperation with professional institutes such as the Singapore Institute of Architects (SIA), the State Developers' Association of Singapore (SEAS), Association of Consulting Engineers, Singapore (ACES), Institution of Engineers, Singapore (IES), Singapore Contractors Association Limited (SCAL) and Singapore Institute of Surveyors and Valuers (SIV). Through a service journey design thinking approach, the co-creation involved a total of 3 practitioners comprising developers, architects, engineers, planners, and surveyors who have participated in a workshop and 10 interviews.

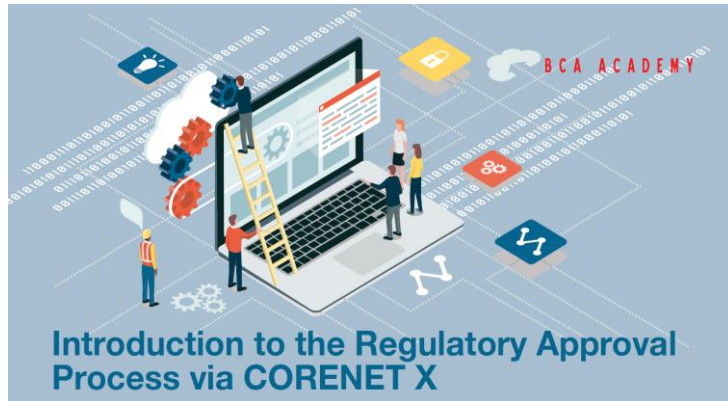
CORENET X is multi-agency effort by

Competency Building : RABW Course

231 consulting firms so far

> 650 RABW course attendees

- ✓ Completed 3 physical runs conducted by BCA/URA at BCA Academy with regulatory agencies
- ✓ Onboarded 8 other training providers to conduct physical courses
- ✓ Developed an online asynchronous version with a training provider



The ARCHITECTS ACADEMY
[CORENET X: RUN 9]
Introduction to the Regulatory Approval Process via **corenetx**
8 December 2023, Friday
9.00 am - 6.00 pm
SIA Lounge L2, 79 Neil Road
4 CPD points + Certificate of Attendance

BIMAGE
CORENET X New Regulatory Approval Process For Building Works (RABW)
Objectives:
At the end of the course, participants will be able to:
• Appreciate the key changes to the existing regulatory approval process under CORENET X
• Understand the new submission requirements for different types of building works
• Explain the objectives and requirements for different stage of submission
Content:
• Overview of CORENET X
• Key transformation in regulatory practices
• RABW - 3 gateway process & RABW - direct submission process
• Preview of Submission Portal
Venue:
3791 Jalan Bukit Merah, #10-11/12/13, @Redhill 159471
Supported by: **corenetx**
Certificate will be issued after the Course

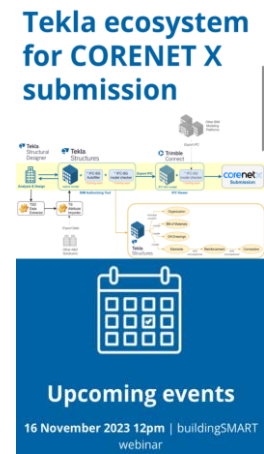
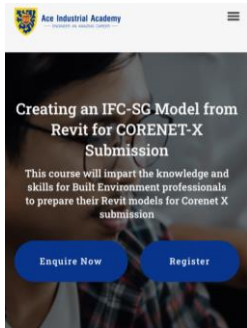
SP Singapore Polytechnic
BROWSE SP PACE
Introduction to Construction and Real Estate Network X (CORENET X) and Industry Foundation Classes (IFC)
Topic: Built Environment, Others
Course Type: Short & Modular Courses



BIM/IFC-Sg Adoption

IFC-SG Training

62 consulting firms so far
> 165 IFC-SG course attendees



- ✓ Lecture and hands-on course in preparing BIM models for IFC-SG submission
- ✓ 5 training providers cater to users of all 4 different BIM software that support IFC-SG
- ✓ 1 more training provider in midst of onboarding

Other IFC-Sg Resources/Support

+ Autodesk Revit

+ Bentley OpenBuildings

+ Graphisoft Archicad

- Trimble Tekla

- [Online help](#) on exporting to IFC in Tekla
- Recording of the IFC Webinar, which includes demonstrations on features supporting IFC



ACES CORENET X
Lunchtime Talks



Date: **21 August 2023 (Monday)**
 Time: **12.00 pm to 2.00 pm**
 Mode of Delivery: Online via Zoom
 Fee: Complimentary for ACES Member
 CPD: **2 PDU**

TOPIC & AGENDA

ACES is organising a short online lunchtime talks for CORENET X. In this session JTC, Squire Mech and Arup are invited to share with members their sandbox project and their experience with Revit and IFC-SG.

Registration link and QR Code
<https://us02web.zoom.us/j/921010na58-c?pwd=6ZAhO9WRh4scuirDMrHND10na58-cjZu.6ZAhO9WRh4>



Opportunities to learn and refine workflows from Sandbox

1. Improving IFC-SG Data Representation

- Worked on creating 3rd party apps / scripts / etc for ease of populating and checking Data in IFC-SG Model
- Continued refinement and streamlining of IFC-Sg requirements to reduce data load in submissions



2. Increase Project Team Readiness

- Important for BIM managers to have clarity on how IFC-SG works, which may result in changes to in-house workflows
- Familiarization of team on multi-disciplinary submissions in new CORENET X RABW Gateways

Other Upcoming Initiatives

Clinics and Helpdesk

- To provide troubleshooting and support channels for industry when facing problems / issues in practice



Regular Clinics

in small class format, similar to tutorial classes

- to provide support and hand-holding in partnership with BIM training providers



Helpdesk

- to provide frontline support, managing queries, issues and feedback

04

CORENET X

Readiness Check

Getting Yourself CORENET X Ready

1 Learning

EQUIP

- Self-help resources and step-by-step videos on CX website
 - Past webinars on RABW, IFC-SG, and COP
 - how to prepare a CX submission
- Training courses
 - 1-day IFC-SG training on creating an IFC submission
 - 1-day RABW training on the new approval process with case study



Self-help resources & Basic CX Training

GUIDE

2 Practising



Code of Practice

- The COP provides clarity in CX submission requirements for all agencies across every gateway

May 2023 Draft released for industry feedback

Sep 2023 Official release of Version 1



IFC-SG Tools

- IFC-SG validator to help industry to validate the completeness of the IFC-SG model content
- BCA has worked with BIM software vendors to develop additional IFC-SG tools

3 Troubleshooting

SUPPORT



Clinics/Tutorials

Partner with training providers to provide clinics/tutorials to assist and hand-hold



Helpdesk

- Provide frontline support, manage queries, issues and feedback
- Track cases and issues to ensure follow-up actions are carried out promptly

Readiness Checklist for Firms

Firms should have the following in place:



People

- Core team to oversee firm's preparation
 - Internal subject matter experts as “go-to” persons
- Internal change management and training plan
 - Setting and tracking of KPIs



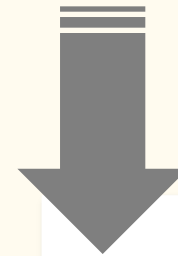
Process

- Understand the RABW process & agencies' requirements
 - Attend RABW training to be familiar with process
 - Study the COP
 - Map RABW to workflow and assess impact



Technology

- BIM and IFC-SG readiness
 - Trained in IFC-SG and familiar with various IFC-SG tools
 - Create/Map internal templates to meet IFC-SG requirements



**STRONG TEAM OF
CONSULTANTS THAT ARE
READY TOGETHER**

Several firms have already started on CORENET X !



- Working with consultants of selected single-unit landed house projects for live DSP submission
- Targeted industry engagement to identify suitable projects and consultant teams for:
 - Live submission through CORENET X if the project timeline matches
 - Sandbox with parallel submission in CORENET 2 otherwise (e.g. CG)
- Dedicated resources to handhold project teams and guide them through the submission process
 - *Incl demo and testing out of the new submission portal*
 - *Hands-on Collab Platform workshops for agency processing officers*
 - *Trouble-shooting with relevant BIM software developers*
- Industry-agency partnerships and reiterative refinement processes
 - *IFC-SG Validation and Streamlining*
 - *COP Development and Refinements*

Summary of Useful Weblinks/QR codes

More details on CORENET X
can be found at
<https://go.gov.sg/cx>



<https://go.gov.sg/cx>

CORENET X Code of Practice
<https://go.gov.sg/cxcop>



<https://go.gov.sg/cxcop>

CORENET X Training Resources
<https://go.gov.sg/cxtraining>



<https://go.gov.sg/cxtraining>

Thank You

Preparing your 1st CORENET X Submission with the Code of Practice

Ar. Colin Chew | CORENET X Project Office

No. of slides: 34





CORENET X Code of Practice Published!



<https://go.gov.sg/cxcop>

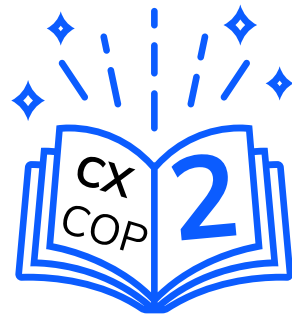
- ✓ **First Edition** published on 26 Sep 2023 with industry's feedback
- ✓ Guide on how to prepare regulatory **submissions on CORENET X**
- ✓ This Code of Practice **does not** substitute Handbooks, Circulars or other regulatory publications of our regulatory agencies.
- ✓ **Complements other resources on the CORENET X website**, including the IFC-SG Resource Toolkit



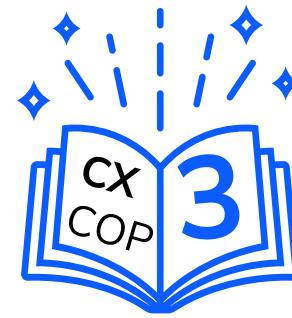
Preparing your 1st CORENET X Submission with the COP



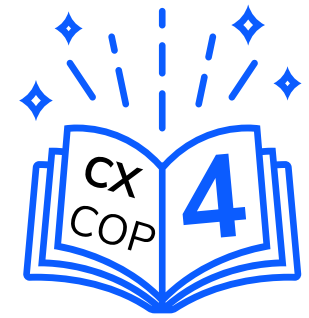
**Overview of
CORENET X**



**General
Requirements**



**Specific
Requirements**



**BIM
Components**

Preparing your 1st CORENET X Submission with the COP



**Overview of
CORENET X**



**General
Requirements**



**Specific
Requirements**



**BIM
Components**

A Quick Recap of CORENET X

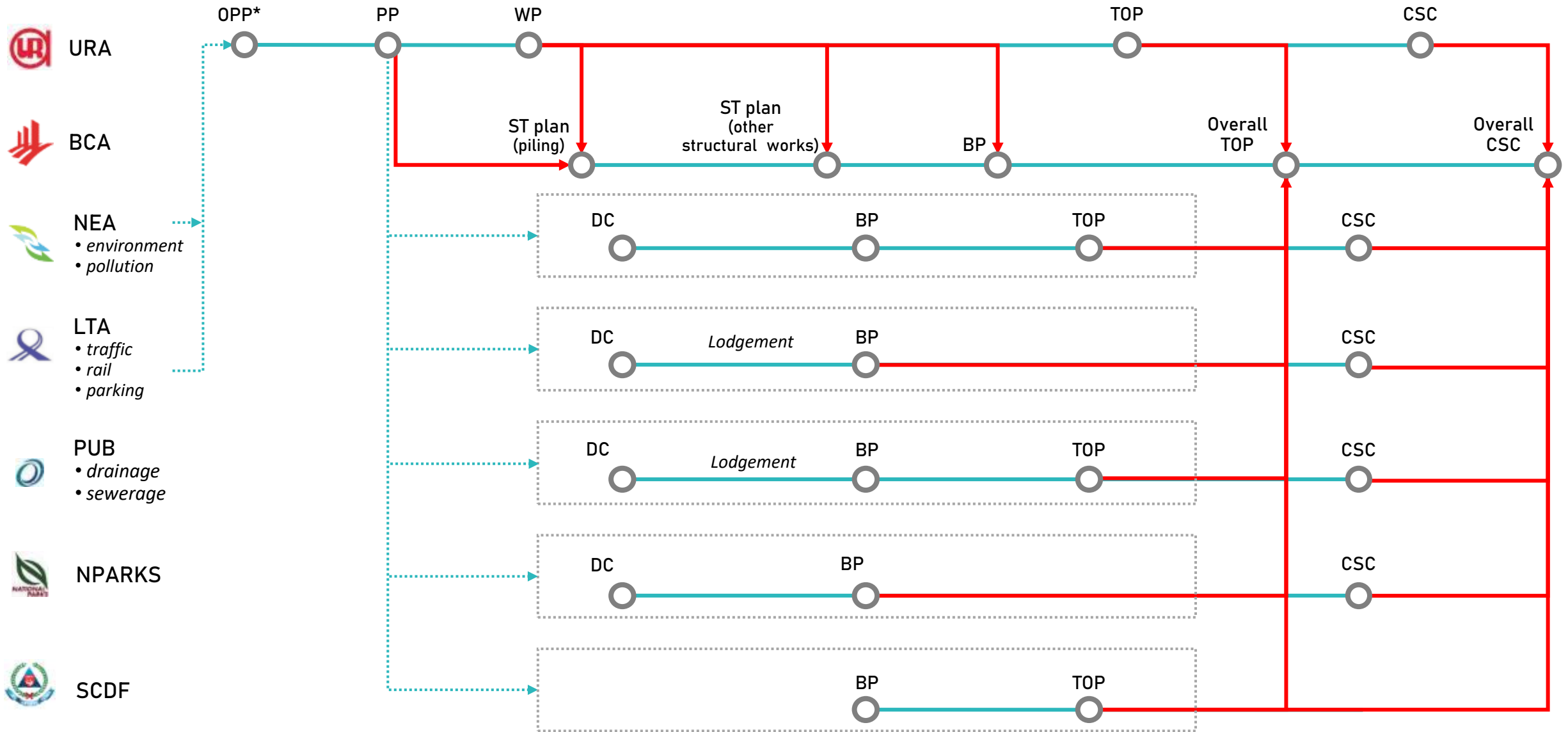
I'm not very sure what is CORENET X, **is it different from CORENET 2.0?**



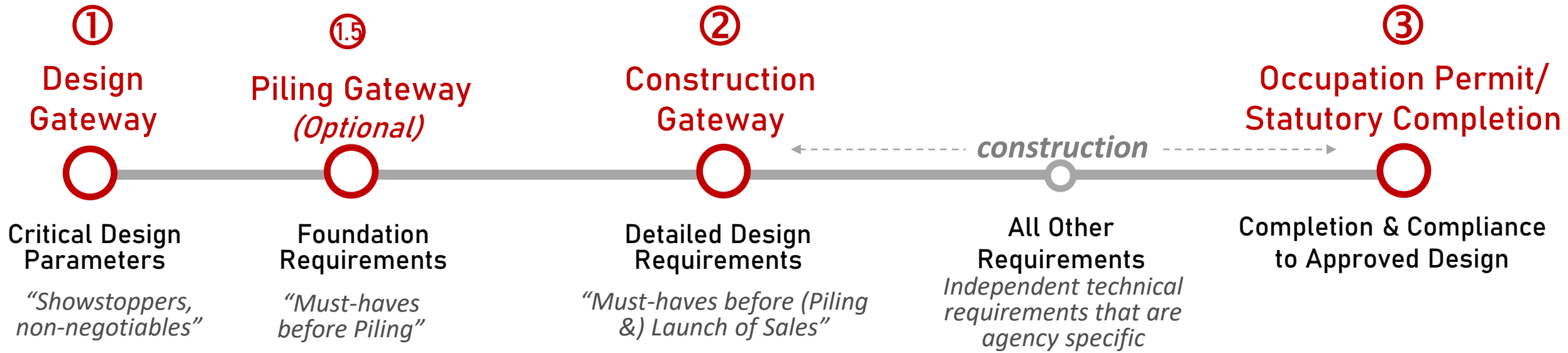
- Unlike CORENET 2.0, **CORENET X** will
 - (1) Facilitate and support new workflows that allow **project teams to submit coordinated BIM** to the authorities, and
 - (2) Bring **officers from multiple agencies** together to **review submission collectively** and provide a **consolidated response** to the project team
- For more introduction of CORENET X, you can refer to **Section 1 of the COP**



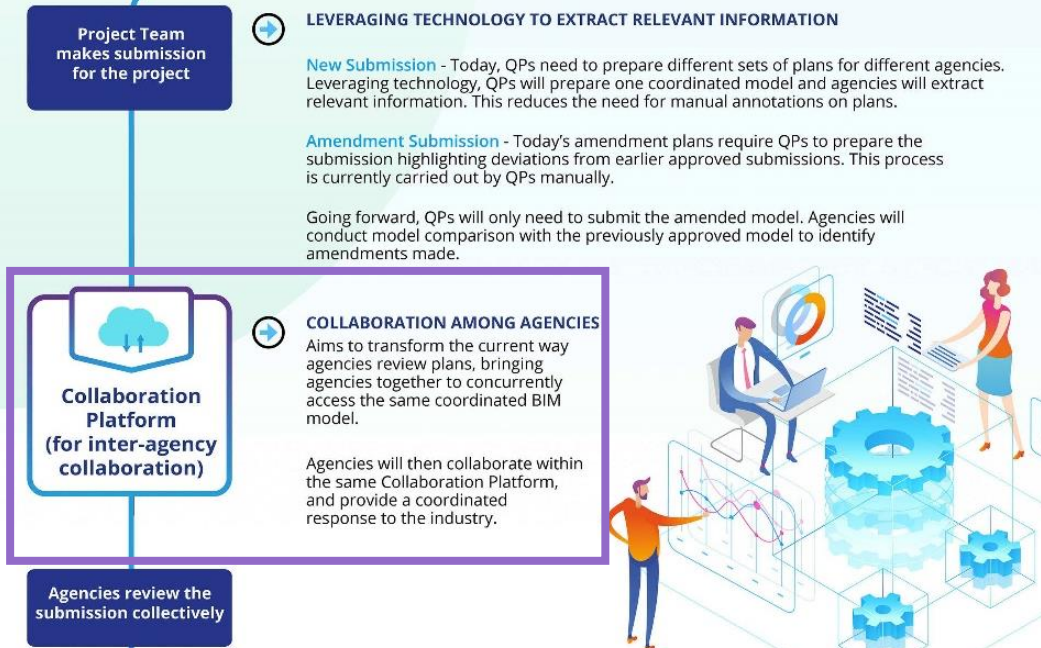
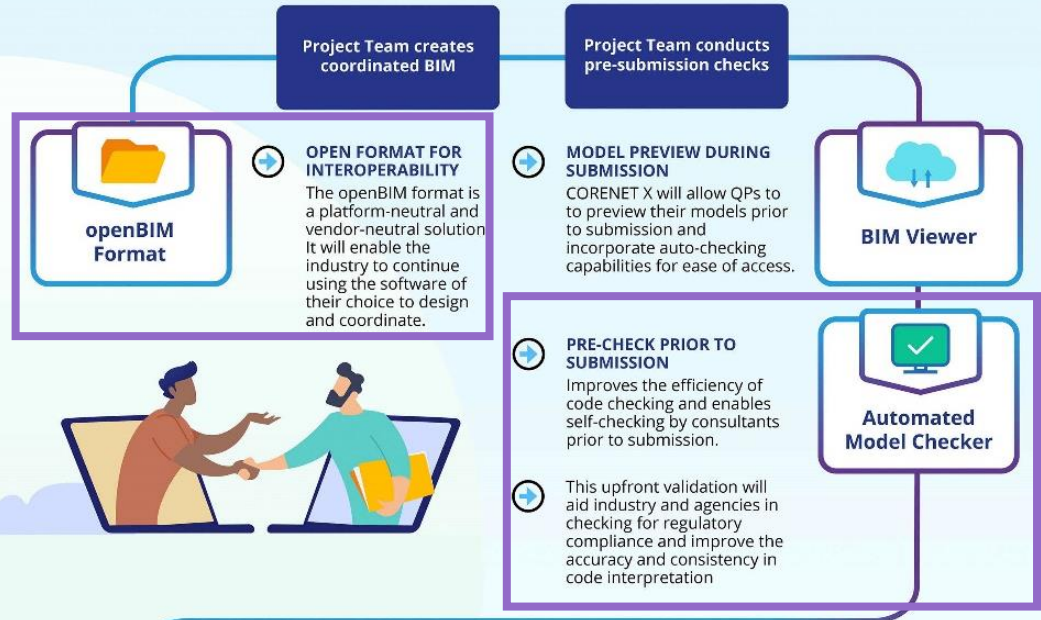
Today's Practice



Future Submissions via CORENET X



CORENET X User Journey



- To support the new workflows, technological enablers are being developed:
 - openBIM format**
 - Automated Model Checker**
 - CX Backend: Collaboration Platform for agencies' use**
- For a user journey of workflow and tech enablers of CORENET X, you can refer to **Section 1 of the COP**



How will Agencies
Come Together to
Review My
Submission?

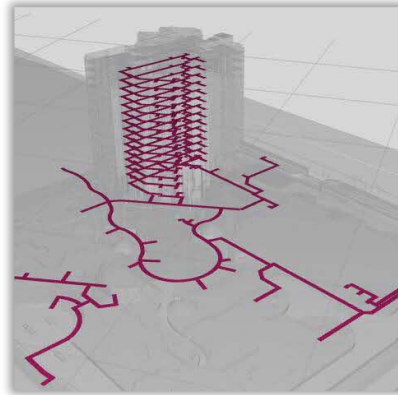


Preview of CORENET X Backend Platform to Facilitate Collaboration among Agencies

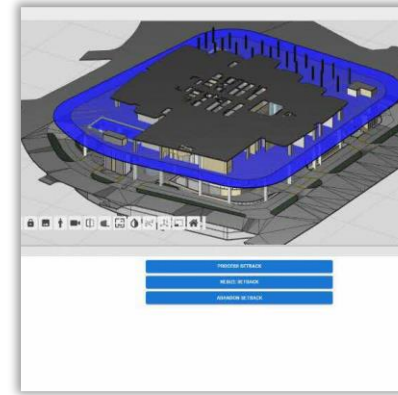
Yin Zili | CORENET X Project Office

A Preview of CORENET X Backend: Collaboration Platform (CP)

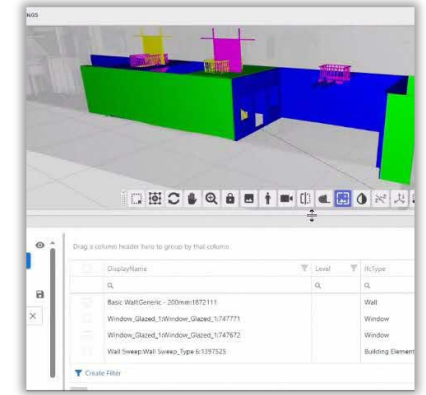
**Facilitating
Concurrent BIM
Review**



**Auto-extract &
present data**



**Enable setback
checks**



**Auto-identify
changes**

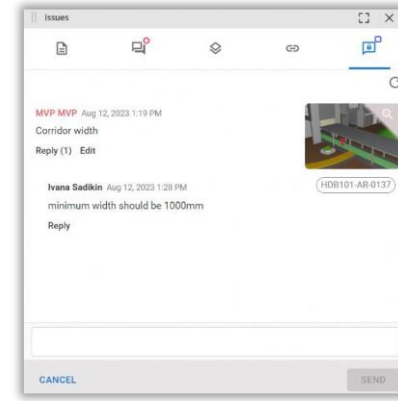
**Enabling
Collaboration**

Category

Clause

Description (Optional)
Try to be as specific and concise as possible in your description of the issue.

**Standardization in
issues recording**



**Collaboration
among Agencies**

18435-9966 23 Jun 2023 Tue 25 Jul 2023 Review by Department

History

| Workspace | Status | Comments | Created |
|------------|-----------------------------------|----------|-----------------------|
| BCA-DIV1 | <input type="radio"/> Outstanding | | Fri, 23 Jun 2023 22:0 |
| BCA-DIV2 | <input type="radio"/> Outstanding | | Fri, 23 Jun 2023 22:0 |
| ITA-DIV1 | <input type="radio"/> Outstanding | | Fri, 23 Jun 2023 22:0 |
| MPark-DIV1 | <input type="radio"/> Outstanding | | Fri, 23 Jun 2023 22:0 |
| PUB-DIV1 | <input type="radio"/> Outstanding | | Fri, 23 Jun 2023 22:0 |
| NEA-DIV1 | <input type="radio"/> Outstanding | | Fri, 23 Jun 2023 22:0 |
| BCA-DIV1 | <input type="radio"/> Outstanding | | Sat, 24 Jun 2023 05:0 |
| BCA-DIV2 | <input type="radio"/> Outstanding | | Sat, 24 Jun 2023 05:0 |

**Transparency in
Response**



Preview of CP: Auto-extract & present data

Query (Accessible Route)



Preview of CP: Auto-extract & present data

Query (Sanitary)



Queries

Group 1: PredefinedType ↑

CREATE

sa

Sanitary

| Display Name | External Entity | Object Type | System | Material Layer 1 | Diameter | Gradient |
|--|-----------------|-------------|--------|------------------|----------|----------|
| PredefinedType: CONNECTOR (Count: 3726) | | | | | | |
| [ExternalEntity] Is any of ('IfcDistributionChamberElement', 'IfcWasteTerminal') Or ([ExternalEntity] Is any of ('IfcValve', 'IfcPipeSegment', 'IfcPipeFitting') And ([System] Contains 'SANI... Clear | | | | | | |

15 50 100

Page 1 of 1 (8847 items) 1

Preview of CP: Auto-extract & present data

Query (Structural Column)



Queries

|| Saved Queries CREATE

Filter Queries

- Assessment - Accessible Route
- Assessment - Parking Lot
- Assessment - Trees
- BD-Area of Structural System Adopted

Drag a column header here to group by that column

Sync Viewer Sync Issues Total Columns Variables + Search

No data


15 50 100

Page 1 of 1 (0 items) 1

Preview of CP: Auto-extract & present data

Query (Refuse Rate)

OPEN MODEL DATA SETTINGS



Queries

Sync Viewer Sync Issues Total Columns Variables

Filter Queries

- Assessment - Accessible Route
- Assessment - Parking Lot
- Assessment - Trees
- BD-Area of Structural System Adopted

15 50 100

No data

Page 1 of 1 (0 items) 1

Preview of CP: Enable Setback Checks

Setback



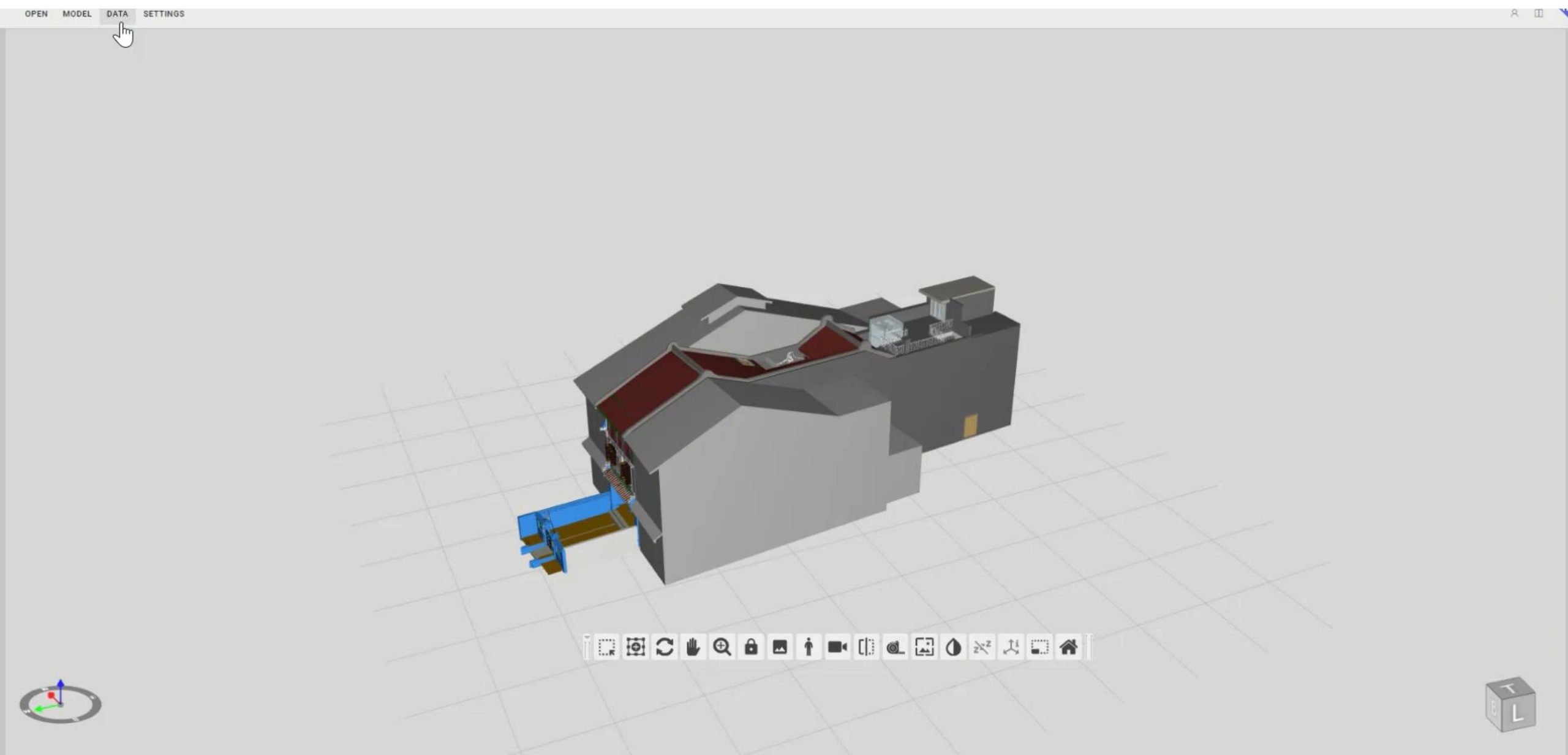
Preview of CP: Collaboration among Agencies

Leaving Comments



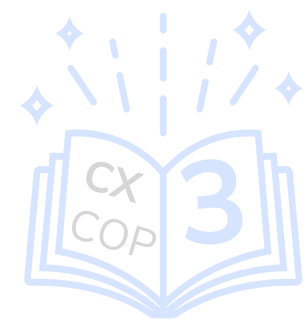
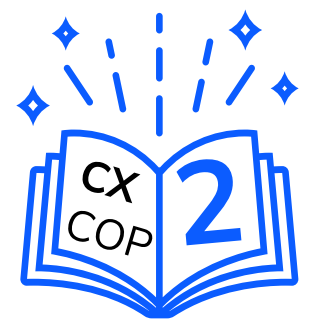
Preview of CP: Auto-identify Changes

Version Compare





Preparing your 1st CORENET X Submission with the COP



Overview of
CORENET X

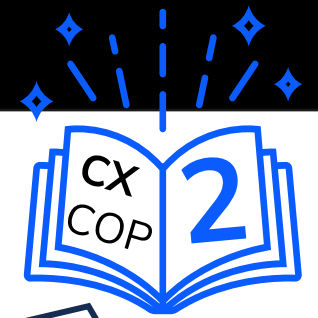
**General
Requirements**

Specific
Requirements

BIM
Components



Basics of a CORENET X Submission



With all these changes in submission processes, will the QP's **liabilities today change?**

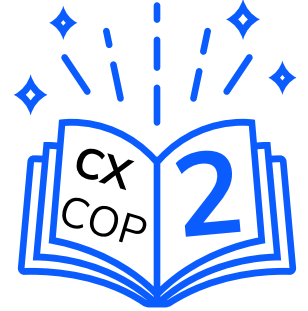
I heard we need to have upfront coordination, but **what exactly is needed?**

Can I still do an **amendment submission** like today?

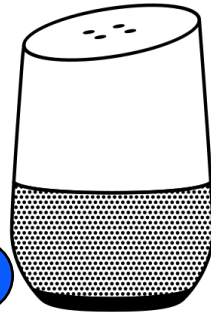
- Nope! All Statutory responsibilities **remain unchanged**
- In a BIM submission, the project team should ensure that **basic / key components** from each discipline **do not clash** with one another
- Step by step diagrams on **joint** submission workflows for new and amendment submissions can be found in **Section 2 of the COP**



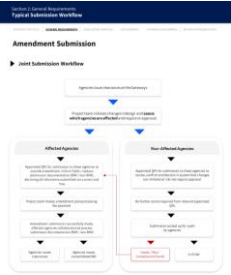
Amendment Submission Workflow



Amendment submission should **not be done in silos**, let's review amendments to **design holistically!**

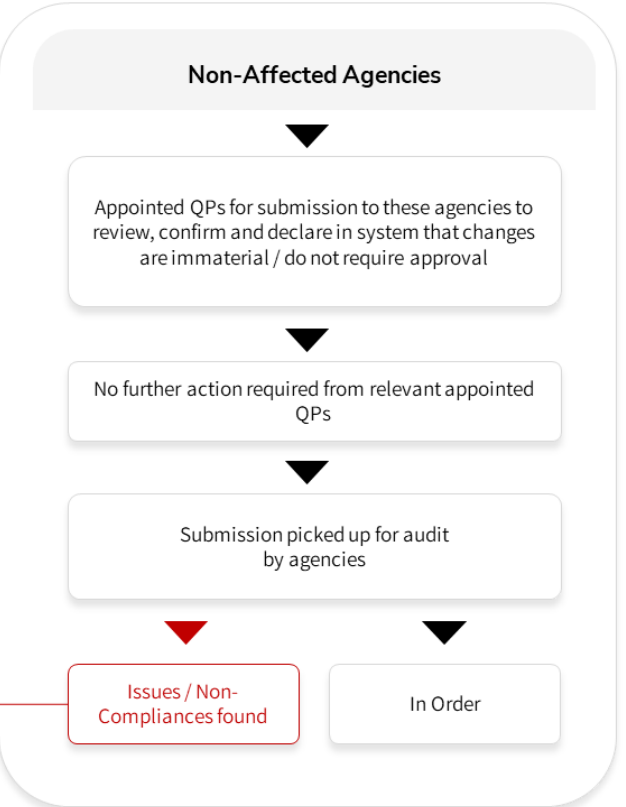
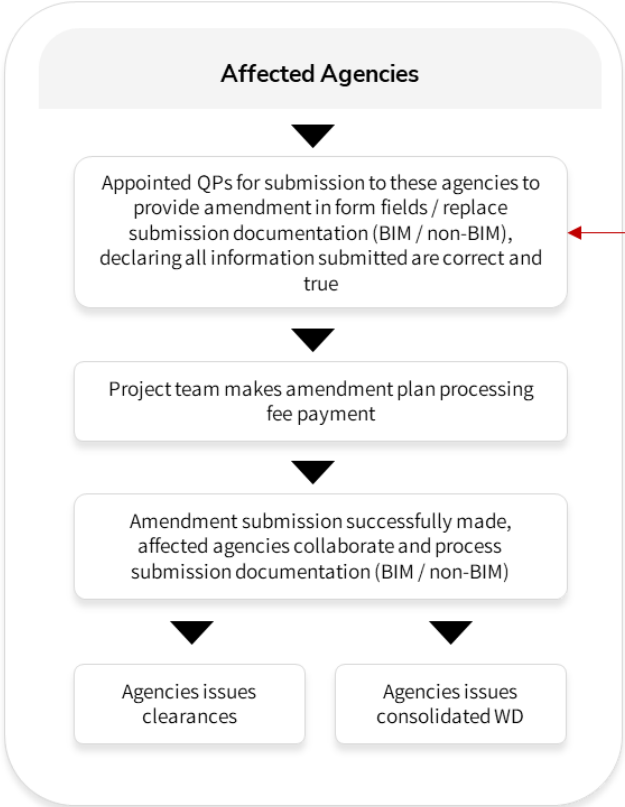


Smart Reminder



Agencies issue clearances at the Gateways

Project team initiates changes in design and **assess which agencies are affected** and require re-approval



QPs, remember to **indicate the agencies affected** during your amendment submissions

Smart Reminder Mini

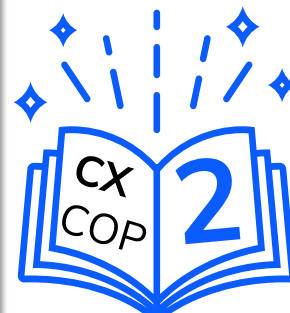
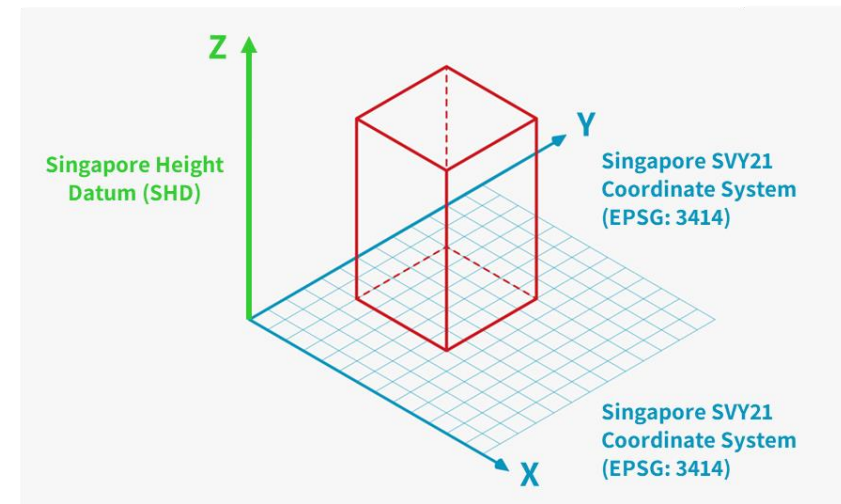
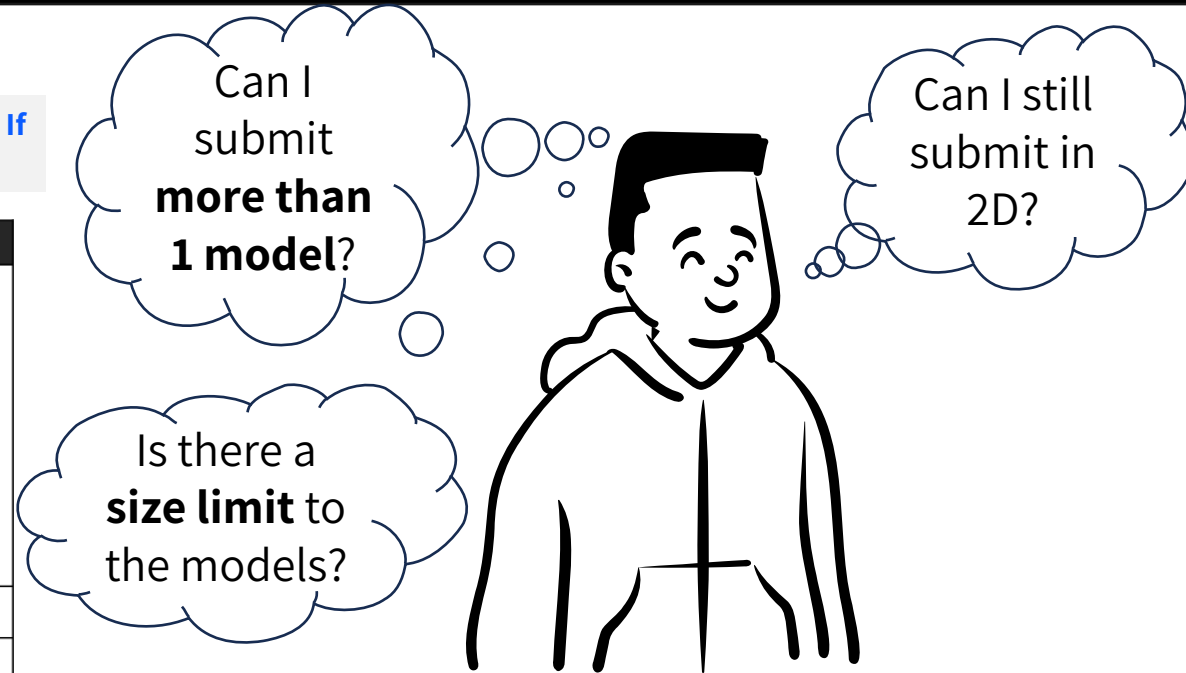


How To Include Multiple Files Per Submission

► Model Size

Each model should not exceed 800 MB, and be submitted by parts (i.e. 1 block per file). If a part model exceeds 800MB, the part model should be split into smaller files.

| Examples | Architecture | C&S Engineering | M&E Engineering |
|--|---|--|--|
| IFC-SG models, all geo-referenced | <ul style="list-style-type: none"> Blk 1 Model Blk 2 Model Podium Model | <ul style="list-style-type: none"> Blk 1 Model Blk 2 Model Podium Model Substructure Model (For foundation and piling works) <p>Note: For projects which did not opt for Piling Gateway (G1.5), the project team will need to include all permanent foundation works in Construction Gateway (G2).</p> | <ul style="list-style-type: none"> Blk 1 Model Blk 2 Model Podium Model |
| As mentioned on Page 16 , models from all disciplines <u>MUST</u> name levels and zones identically. | | | |
| 2D drawings | <ul style="list-style-type: none"> Details (e.g. household / storey shelter documentation and detailing) External Works | <ul style="list-style-type: none"> General notes Special details (e.g. slab reinforcement detailing, complex structure detailing, precast joints, prestressed details, steel connections) External Works | <ul style="list-style-type: none"> Details (e.g. cooling tower documentation and detailing) External Works |
| Design Calculation reports | - | Design calculation reports from QP, AC, [QP(Geo) & AC (Geo), if needed] | - |
| Additional supporting documents | <ul style="list-style-type: none"> B-Score BDAS form Public Communication Plans (if applicable) | <ul style="list-style-type: none"> B-Score BDAS form Supporting documents for piling works: <ul style="list-style-type: none"> Site Investigation report in pdf & AGS format Impact assessment report Topography | <ul style="list-style-type: none"> B-Score BDAS form Pollution Control Study (PCS) reports |
| Pre-consultation document | - | Completion letter of pre-consultation (for complex structure only) | - |



Simplified 6 Key Steps on IFC modelling



Key BIM Software Vendors have also contributed 6 simplified modelling steps to help with IFC onboarding in **Section 2** of the COP

Section 2: General Requirements Model Preparation (Revit)

INTRODUCTION TO CX | **GENERAL REQUIREMENTS** | REGULATORY ADVICES | KEY GATEWAYS | OTHER BUILDING WORKS | BIM DATA REPRESENTATION

Preparing Models for Submission (Revit)

Example using Revit Configuration File

3. Set the Revit Workset

- To easily select the elements during IFC-SG Parameters mapping.
- To filter the views per Agency Submission.
- To reduce time when Exporting model in IFC format.
- To easily navigate when Modelling and model auditing.

S2 - Fig 11

4. IFC-SG Mapping

- Use BIM Interoperability Tools to assign IFC parameters
- To avoid misspelled IFC parameters (misspelled parameters will not be exported).
- Faster than manual parameter key-in.
- Elements will be exported into the correct IFC category.

S2 - Fig 12

[Link IFC-SG Resource Kit](#)

28

Section 2: General Requirements Model Preparation (Archicad)

INTRODUCTION TO CX | **GENERAL REQUIREMENTS** | REGULATORY ADVICES | KEY GATEWAYS | OTHER BUILDING WORKS | BIM DATA REPRESENTATION

Preparing Models for Submission (Archicad)

Example using Archicad Configuration File

3. Set the View for Export from Navigator

- To easily view and select the elements while modelling.
- To easily navigate while modeling and checking.
- To filter the reviews as per Agency Submission.
- To easily export only elements visible on the current view.

S2 - Fig 19

4. Model Verification using IFC Project Manager

- IFC Project Manager for Model Verification before export
- Assign or edit IFC-SG Property Values.
- Create custom IFC Property, Groups (Zones, Systems)

S2 - Fig 20

[Link IFC-SG Resource Kit](#)

29

Section 2: General Requirements Model Preparation (Tekla)

INTRODUCTION TO CX | **GENERAL REQUIREMENTS** | REGULATORY ADVICES | KEY GATEWAYS | OTHER BUILDING WORKS | BIM DATA REPRESENTATION

Preparing Models for Submission (Tekla)

Example using Tekla Configuration File

1. Geo-reference the project

- To place model relative to the selected project base point using the coordinate system values.

S2 - Fig 23: Example of Base Point Dialog Box

S2 - Fig 24: Example of Add model Dialog Box

S2 - Fig 25: Example of Base Point on model

2. Identify the IFC properties to be tagged into each element of your model

- Element's properties are automatically populated as measure type while modeling, no need to fill in manually.

| Structure | IFC Class | IFC Sub Type | IFC Property Set | Property Name | Property Type | Property Value | IFC Model Set |
|-----------|-----------|-----------------|------------------|---------------|---------------|----------------|---------------|
| 101 | Room | Room on surface | IFC_ROOM | RoomName | Text | Room 101 | Room |
| 102 | Room | Room on surface | IFC_ROOM | RoomName | Text | Room 102 | Room |
| 103 | Room | Room on surface | IFC_ROOM | RoomName | Text | Room 103 | Room |
| 104 | Room | Room on surface | IFC_ROOM | RoomName | Text | Room 104 | Room |
| 105 | Room | Room on surface | IFC_ROOM | RoomName | Text | Room 105 | Room |
| 106 | Room | Room on surface | IFC_ROOM | RoomName | Text | Room 106 | Room |
| 107 | Room | Room on surface | IFC_ROOM | RoomName | Text | Room 107 | Room |
| 108 | Room | Room on surface | IFC_ROOM | RoomName | Text | Room 108 | Room |
| 109 | Room | Room on surface | IFC_ROOM | RoomName | Text | Room 109 | Room |
| 110 | Room | Room on surface | IFC_ROOM | RoomName | Text | Room 110 | Room |

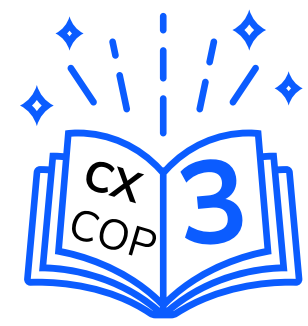
S2 - Fig 26

30





Preparing your 1st CORENET X Submission with the COP



Overview of
CORENET X

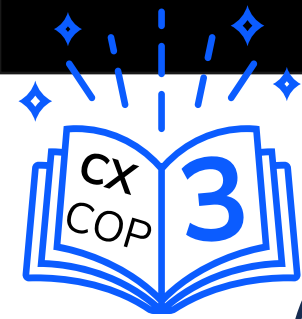
General
Requirements

**Specific
Requirements**

BIM
Components



All about the new CORENET X Process



- **All agencies' requirements are listed** in detail for the respective disciplines at each of the gateway to prepare / obtain **multi-agency gateway** approvals
- If required, the project team may carry out **pre-consultation with agencies** prior to submission
- For **agency-specific submission, independent submissions** are allowed.
- The COP has indicated whether they need to be in BIM or in 2D format to complement the BIM submissions.
- If you are tasked to **plan your project timeline**, pls refer to **Section 3 of the COP**

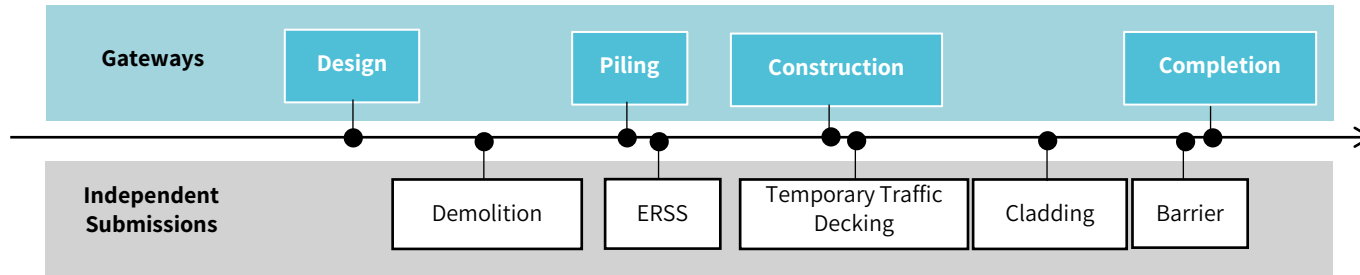
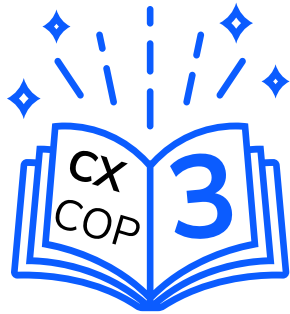
Are there drawings that I can still submit **independently** like current practice?

What are the **URA requirements** at the gateways? Is it like the PP today?



All about the new CORENET X Process

Example of a project making regulatory submissions across CORENET X Gateways



Section 3: Specific Requirements by Regulatory Agencies Singapore Civil Defence Force (SCDF)

INTRODUCTION TO CX | GENERAL REQUIREMENTS | **REGULATORY AGENCIES** | KEY GATEWAYS | OTHER BUILDING WORKS | BIM DATA REPRESENTATION



Singapore Civil Defence Force (SCDF)

Legend: Architecture C&S M&E (IIC COMPONENT)

| G2 Construction Gateway | |
|---|---|
| Key Words | Requirement Category |
| Fire Alarm System <i>(continued from previous page)</i> | Combined Sprinkler and Wet Riser System <ul style="list-style-type: none"> Types of buildings / areas requiring combined sprinkler and wet riser system Provision of sprinklers for basement and aboveground QP to declare combined sprinkler and wet riser system is provided for the functional space <p><u>Components to be modelled:</u></p> <ul style="list-style-type: none"> Location of Sprinkler Control Valve Breeching Inlet Landing Valve <p><u>Components to be indicated:</u></p> <ul style="list-style-type: none"> Fire Alarm Panel |
| <ul style="list-style-type: none"> FIRE ALARM BREECHING INLET LANDING VALVE SYSTEM SPACE | Home Fire Alarm Device (HFAD) <ul style="list-style-type: none"> Types of building requiring HFAD QP to declare Home Fire Alarm Device is provided for the functional space Location and Number of HFAD points |
| | Manual Alarm System <ul style="list-style-type: none"> Types of building / usage exempted from manual call points <p><u>Components to be modelled:</u></p> <ul style="list-style-type: none"> Manual Alarm Call Points Fire Alarm Sounder Visual Alarm <p><u>Components to be indicated:</u></p> <ul style="list-style-type: none"> Fire Alarm Panel |
| | Sprinkler System <ul style="list-style-type: none"> Types of buildings / areas requiring sprinkler system Provision of sprinklers for basement and aboveground buildings Exemption of sprinkler system <p><u>Components to be modelled:</u></p> <ul style="list-style-type: none"> Location of Sprinkler Control Valve <p><u>Components to be indicated:</u></p> <ul style="list-style-type: none"> Fire Alarm Panel |

Section 3: Specific Requirements by Key Gateways Independent Agency Submissions

INTRODUCTION TO CX | GENERAL REQUIREMENTS | REGULATORY AGENCIES | **KEY GATEWAYS** | OTHER BUILDING WORKS | BIM DATA REPRESENTATION



Independent Agency Submissions

Legend: Architecture C&S M&E Builder (IIC COMPONENT)

| Buildability | |
|------------------------------|---|
| Agency | Requirement Category |
| BCA | Constructability Implementation Plan (CIP) <ul style="list-style-type: none"> BIM Plans which describe and define the type, extent of use and details of the system framework <p><u>Supporting Documents for CIP:</u></p> <ol style="list-style-type: none"> Documents (e.g. photos, 2D plans, etc.) on the use of construction techniques, processes, plant, equipment and innovative methods <p>Constructability Score (C-Score)</p> <ol style="list-style-type: none"> C-Score Calculations (to be computed and submitted by Builder in PDF format) |
| Conservation | |
| Agency | Requirement Category |
| URA | Refer to URA Conservation Requirements here |
| Environmental Sustainability | |
| Agency | Requirement Category |
| BCA | <ul style="list-style-type: none"> Air-Tightness and Leakage Building Energy Performance (e.g. Plant efficiency, Air distribution efficiency, Total System Efficiency, Lighting system performance etc) where applicable Measurement and Verification (M&V) Instrumentation Electrical Submetering Maintenance of Building Cooling System Performance Carbon Reduction Measures, including Resource Efficiency Measures such as CUI, Embodied Carbon etc. <p>For more information, please refer to the Guidance Notes and Documentation Requirements under Code for Environmental</p> |

Section 3: Specific Requirements by Other Building Works External Works

INTRODUCTION TO CX | GENERAL REQUIREMENTS | REGULATORY AGENCIES | KEY GATEWAYS | **OTHER BUILDING WORKS** | BIM DATA REPRESENTATION



External Works

About

Note that External Works is undergoing further refinements. More updates will be released in future COP versions.

- Under CORENET X, the QP has to submit the proposed external works to the LTA, NParks and PUB for a coordinated regulatory review. To guide the industry in preparing their external works submissions at the various gateways, the agencies have worked together to map their regulatory objectives and requirements. Due care was taken to ensure that:
 - There are no direct conflicts in the rules between the agencies.
 - Various components of the road typology is holistically reviewed by the respective agencies within the same gateway.
- External works details can be submitted in the 2D CAD format.

Sharing of Submission Templates to Standardise Details

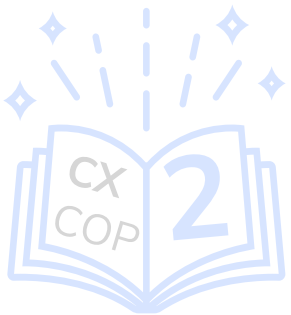
| Agency | 2D Plan Representation / Templates | Examples |
|--------|--|----------|
| LTA | <ul style="list-style-type: none"> LTA will provide drawing templates for the various plans (e.g. traffic, alignment, site plan, profile, section / details etc.) to better guide QPs to prepare the design details to be reflected in the plans. Example, S3 - Fig 1 (right): Part of a road layout template for various common road infrastructure facilities. | |



Preparing your 1st CORENET X Submission with the COP



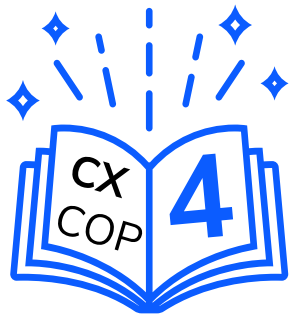
Overview of
CORENET X



General
Requirements



**Specific
Requirements**



**BIM
Components**



How the new process links to IFC-SG components



Do I have to model out the **accessibility routes in 3D**?

Wait, I only know how to model for DWF submission. **What is IFC-SG?**

Which details can be shown in **2D drawings**?

- **A-Z glossary on 3D components**, on IFC-SG data needed, with diagrams, tips and examples of how they are shown tomorrow
- Indicates process related to each 3D component
- Complements the **IFC-SG Resource Kit** (templates to generate IFC models)
- For more on Data information, you can refer to **Section 4 of the COP**

Diagrams to help with IFC-SG understanding

Section 4: BIM Data Representation (IFC-SG) and Modelling Good Practice Typical Components in a Project ("Identified Components")

INTRODUCTION TO CX | GENERAL REQUIREMENTS | REGULATORY AGENCIES | KEY GATEWAYS | OTHER BUILDING WORKS | BIM DATA REPRESENTATION

Space

About

As 'IfcSpace' is the most common component across all agencies, it is broken down into 2 sub-sections for ease of understanding. 'IfcSpace' consists of:

- Space (Area Schemes)
- Space (Usage)

| Space Definition | Requirements Involved | Definition | Conceptual Illustration (Not to Scale) |
|----------------------------------|--|--|---|
| 1 Space (Area Schemes) | <ul style="list-style-type: none"> • URA's GFA calculations • NEA's refuse output • LTA's parking provisions | <ul style="list-style-type: none"> • For checks based on GFA only • Spaces will need to be manually verified for 5 types of 'IfcSpace' sub-types: <ol style="list-style-type: none"> 1) AREA_GFA 2) AREA_LANDSCAPE 3) AREA_CONNECTIVITY 4) AREA_STRATA 5) AREA_VERIFICATION <p>These IfcSpace sub-types and their related parameters shall replace the URA-related area schemes for GFA calculation, Unit Plan calculation, Site Coverage computation, Site Area computation and Communal Open Space computation.</p> <p>Properties and other information on Space (Area Schemes) can be found on Page 305</p> | <p>Residential (Non-Landed) Unit See input example on subsequent pages</p> <p>SPACE (AREA SCHEME)</p> |
| 2 Space (Usage) | <ul style="list-style-type: none"> • BCA's Accessibility requirements • LTA's Minimum Driveway Width • NEA's Sanitary Provisions • PUB's Minimum Platform Levels • SCDP's Exit Requirements | <ul style="list-style-type: none"> • For checks based on Occupancy Type, Building Typology and Space Usage • As cross-agency spaces have been harmonized and standardised, each space only require 2 'IfcSpace' properties to address their usage requirements: <ol style="list-style-type: none"> 1) Occupancy Type 2) SpaceName <p>Properties and other information on Space (Usage) can be found at Page 309</p> | <p>SPACE (USAGE)</p> <p>S4 - Fig 70: Space Conceptual Illustration</p> |

Modelling Space in IFC-SG

- You may refer to the IFC-SG Resource Kit for customised plug-ins to help embed Space IFC-SG data into respective BIM software

← Back to Glossary

300

Section 4: BIM Data Representation (IFC-SG) and Modelling Good Practice Typical Components in a Project ("Identified Components")

INTRODUCTION TO CX | GENERAL REQUIREMENTS | REGULATORY AGENCIES | KEY GATEWAYS | OTHER BUILDING WORKS | BIM DATA REPRESENTATION

Sanitary Appliances

By IFC Representation

- Wash Basin

| IFC Entity: IfcSanitaryTerminal | | | | | | |
|---------------------------------|------------------|---------------|------------------|------|------------------|--------------|
| IFC SubType: WASH HAND BASIN | | | | | | |
| S/N | IFC-SG Property | Property Type | Type of Elements | Unit | Input Limitation | Examples |
| 1 | ChildrenFriendly | Boolean | - | - | Yes | TRUE / FALSE |
| 2 | Mounting | Text | - | - | No | - |
| 3 | WELS | Boolean | - | - | Yes | TRUE / FALSE |

By IFC Representation

- Water Closet

| IFC Entity: IfcSanitaryTerminal | | | | | | |
|---------------------------------|--------------------------|---------------|------------------|------|------------------|--------------|
| IFC SubType: URINAL | | | | | | |
| S/N | IFC-SG Property | Property Type | Type of Elements | Unit | Input Limitation | Examples |
| 1 | AmbulantDisabled | Boolean | - | - | Yes | TRUE / FALSE |
| 2 | BarrierFreeAccessibility | Boolean | - | - | Yes | TRUE / FALSE |
| 3 | ChildrenFriendly | Boolean | - | - | Yes | TRUE / FALSE |
| 4 | PanMounting | Text | - | - | - | - |
| 5 | ToiletPanType | Boolean | - | - | Yes | TRUE / FALSE |
| 6 | WELS | Boolean | - | - | Yes | TRUE / FALSE |



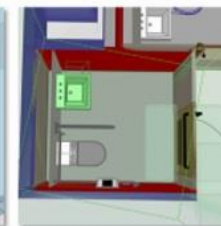
S4 - Fig 76: Urinal



S4 - Fig 77: Urinal



S4 - Fig 78: Wash Basin



S4 - Fig 79: Wash Basin highlighted in Green

← Back to Glossary

283

These diagrams will help the project team have a **better understanding of the data required in the models!**



- For more IFC-SG diagrams, you can refer to [Section 4 of the COP](#)



What's next?

1

What Our Project Team Should Know

- Plan on how to make gateway submissions as a **team**
- Ensure each member is **clear on their own independent agency submissions**

2

What Our In-House Team Should Know

- Internal training on process and data requirements that firm needs to **sync with in-house workflows**

3

What I Should Know

- Familiarise with the COP structure, for faster reference during (1) and (2)

Firm Readiness Check



People

- **Core team to oversee firm's preparation**
 - Internal subject matter experts as "go-to" persons
- **Internal change management and training plan**
 - Setting of KPIs and tracking



Process

- **Understand the RABW process & agencies' requirements**
 - Attend RABW training
 - Study the COP
 - Map RABW to workflow and assess impact

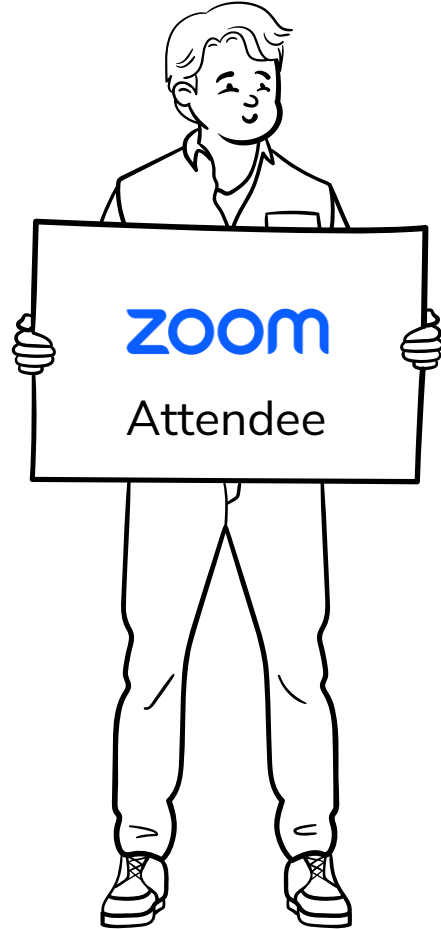


Technology

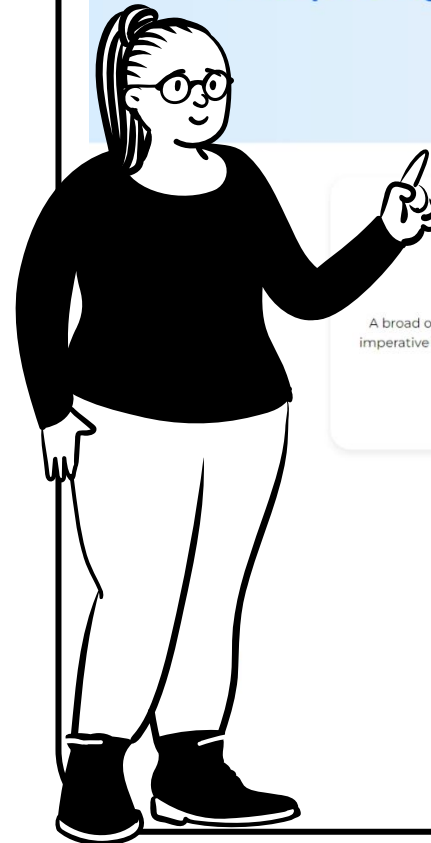
- **BIM and IFC-SG readiness**
 - Trained in IFC-SG and familiar with various IFC-SG tools
 - Create/Map internal templates to meet IFC-SG requirements



What if I have further questions beyond the CX COP?



Can you help?



CORENET X
A One-Stop Digital Shopfront for Regulatory Processes

Frequently Asked Questions (FAQs)



- 1**

General Information

A broad overview to understanding the imperative for CORENET X transformation.

[View all >](#)
- 2**

New Regulatory Approval Process

Learn more about the different facets for an end-to-end CORENET X submission.

[View all >](#)
- 3**

New Data Requirements and Technology

Learn more about the new OpenBIM format adopted in CORENET X as well as the different technologies supporting CORENET X.

[View all >](#)
- 4**

Getting Ready

Find out more on CORENET X trainings and courses to equip yourselves with the necessary knowledge and skillsets.

[View all >](#)
- 5**

Specific Agency Queries and Others

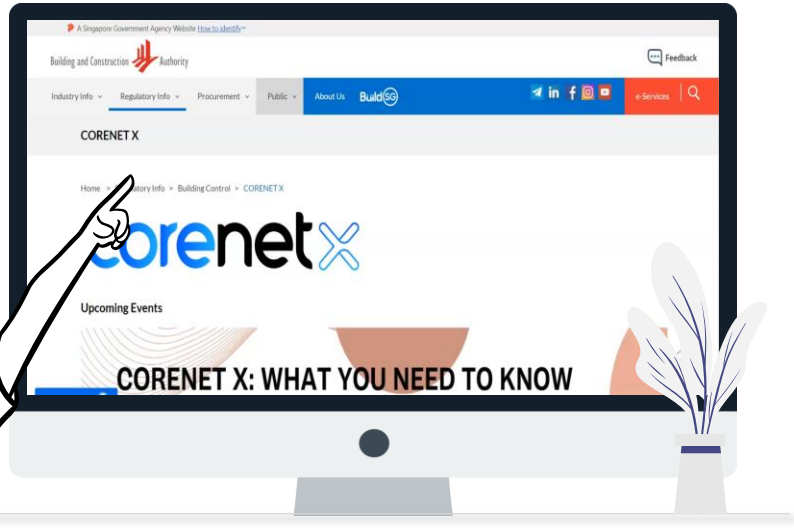
Find out more on specific agency-related queries.

[View all >](#)





What else can I do to get ready?



Scan here to access CORENET X website or go to <https://go.gov.sg/cx>

+ **CORENET X Regulatory Approval for Building Works (RABW) Course**
Understanding the new RABW Processes

+ **1 Day IFC-SG Training**
Preparing OpenBIM submissions using IFC-SG

+ **Self-Help Resources on IFC-SG**
Learn by yourself with these resources



Are you ready for your first CX Submission?

My firm has carried out
1), 2) and 3)

✓ **1** Project Team

✓ **2** In-house Team

✓ **3** Self



Robin

Industry Professional

Questions?

Reach out to us anytime at our new helpdesk!

<https://go.gov.sg/cxenquiry>

Robin made sure his firm is ready
for CX submissions before 2025.

Robin is fast.

Be like Robin.





Are you ready for CORENET X?

You are invited to participate in our upcoming CORENET X Pulse Check Survey. Your input will help us provide the support you need during the transition period.

We look forward to hearing from you!



This pulse check survey is conducted by WSP and Korn Ferry, who are appointed by BCA to facilitate a seamless transition to CORENET X.

CORENET X is a multi-agency effort by



Thank you



Reach out to us anytime at our new helpdesk!

